

Marking Machines



Cloth Drill Marker
Model CD3, CD3H
Hawk/Model CDL, CDLH



Super Lite Drill



**Magnum
Punch Perforator**
Model MP2



Thread Marker
Model LTM



Hot Notcher
Model HVN

INSTRUCTION BOOK AND PARTS LIST

Marking Machines



CAUTION:

Safety glasses should be worn whenever operating this equipment.



Cloth Drill Marker
Model CD3, CD3H
Hawk/Model CDL, CDLH
Page 3-9



Hot Notcher
Model HVN
Page 20-22

Super Lite Drill
Page 10-11



Hawk Drill Marker-Model CDL, CDLH

With its muscle magnifying lever action drill, the Hawk will mark faster and with less operator fatigue, through the hardest materials, than can any other drill marker available. These full-featured models will handle virtually any drill marking you may have. See page 3 for Drill/Awl options.

Super Lite Drill Marker

Engineered with superior durability and convenient servicing in mind, the Super Lite Drill Marker is ideal for the international market, where these requirements are paramount.

Available in cold or heated models and for use with 120v or 240v power supplies and fitted with an 8" or 9-1/2" baseplate, the Super Light Drill Marker is able to perform near the capabilities of our heavier duty models with the advantage of lower initial cost. The Super Lite Drill Marker is for use with 8" drill/ awls of 5/64", 3/32", 1/8", 5/32", 3/16", and 1/4" diameters only. See page 3 for drill/awl part numbers.

Hot Notcher-Model HVN

Especially useful when marking loose knit materials; the Hot Notcher sears a line that will not unravel or become lost in transit to the sewing room. Featuring a fully adjustable heating element for safe use with virtually any fabric, and a variable depth gauge for heavy or specialized material. The Eastman Hot Notcher marking machine is engineered to meet all domestic and international safety codes and is available for 110v/220v, 50/60 Hz and single or three phase power supplies.

Cloth Drill

Model CD3, CD3H, CDL, and CDLH

Operating Instructions



CAUTION:

Read instructions carefully before starting motor. Be sure that voltage is the same as stamped on nameplate

OPERATION

Set gauge as indicated on illustration for drilling proper height of material. Position Drill Marker over mark on material with drill directly over mark. To start, throw switch lever to "on" position and let motor gather full speed before starting to drill.

Enter Drill or Awl into the goods slowly. Do not force the drill thru the material with heavy pressure as this will cause the drill to burn or bend and break, or cause motor damage.

LUBRICATION

The Upper and Lower Motor Ball Bearings as well as the Spindle Ball Bearing in the handle are grease sealed and require no lubrication.

TO CHANGE DRILL

Lay Drill Marker on it's side, use Chuck Key to loosen drill. Remove the old Drill from the Chuck and pull down and thru Drill Guide Bushing.

Insert new Drill thru lower Drill Guide Bushing and up into Chuck. Tighten using the Chuck Key.

NOTE:

Each diameter Drill or Awl requires a corresponding Guide Bushing. See chart below. List the serial number of your drilling machine on all orders for drills or parts.



EASTMAN DRILL SELECTION TABLES

Eastman offers a wide selection of Drill Points and Awls for different type materials.

Make sure you get the type Drill you need. Avoid errors by using the Drill Number listed in the tables.

Drill and Awls for 4" Drills, actually measure 5-1/2" long.

Drill and Awls for 6" Drills, actually measure 7-1/2" long.

Drill and Awls for 8" Drills, actually measure 10" long.

Drill and Awls for 11-1/2" Drills, actually measure 13-1/2" long.

DRILL OR AWL SELECTION TABLE

| Drill or Awl Dia | Drill Length | 3/64" | 5/64" | 3/32" | 1/8" | 5/32" | 3/16" | 1/4" | 5/16** | 3/8** |
|------------------|--------------|----------|----------|----------|----------|----------|----------|----------|----------|----------|
| Hole Size | | ● | ● | ● | ● | ● | ● | ● | ● | ● |
| Diamond Point | 4" | -- | 231C1-1 | 231C1-2 | 231C1-3 | -- | -- | -- | -- | -- |
| | 6" | 231C1-6 | 231C1-7 | 231C1-8 | 231C1-9 | 231C1-10 | -- | -- | -- | -- |
| | 8" | -- | 231C1-12 | 231C1-13 | 231C1-14 | -- | -- | -- | -- | -- |
| | 11-1/2" | -- | -- | -- | -- | -- | -- | -- | -- | -- |
| Taper Point | 4" | 231C2-1 | 231C2-2 | 231C2-3 | 231C2-4 | -- | -- | -- | -- | -- |
| | 6" | 231C1-7 | 231C1-8 | 231C2-10 | 231C2-12 | 231C2-13 | -- | -- | -- | -- |
| | 8" | 231C2-17 | 231C2-19 | 231C2-20 | 231C2-21 | 231C2-24 | -- | 231C2-36 | 231C2-37 | 231C2-38 |
| | 11-1/2" | 231C2-42 | 231C2-43 | 231C2-27 | 231C2-26 | 231C2-28 | 231C2-29 | -- | -- | -- |
| Open End Awl | 4" | -- | 231C3 | 231C3-1 | 231C2-2 | -- | -- | 231C2-5 | 231C2-10 | 231C2-7 |
| | 6" | -- | 231C3-18 | 231C3-11 | 231C3-12 | 231C3-13 | 231C3-14 | 231C3-15 | 231C3-16 | -- |
| | 8" | -- | 231C3-20 | 231C3-22 | 231C3-21 | 231C3-24 | 231C3-23 | 231C3-32 | -- | -- |
| | 11-1/2" | -- | -- | 231C3-25 | 231C3-27 | 231C3-28 | -- | -- | -- | -- |
| Closed End Awl | 4" | -- | -- | 231C4 | 231C4-1 | 231C4-2 | 231C4-3 | 231C4-29 | 231C4-30 | 231C4-31 |
| | 6" | -- | -- | 231C4-5 | 231C4-6 | 231C4-7 | 231C4-8 | 231C4-9 | 231C4-22 | 231C4-23 |
| | 8" | -- | -- | 231C4-15 | 231C4-10 | 231C4-11 | 231C4-12 | 231C4-20 | 231C4-25 | 231C4-24 |
| | 11-1/2" | -- | -- | 231C4-17 | 231C4-18 | 231C4-19 | -- | 231C4-26 | -- | -- |

DRILL GUIDE BUSHING SELECTION TABLE

| | | | | | | | | | |
|------------------------|----------|----------|----------|----------|----------|----------|----------|----------|----------|
| Cold Drill Bushing | 21C13-40 | 21C13-36 | 21C13-34 | 21C13-35 | 21C13-37 | 21C13-38 | 21C13-42 | 21C13-41 | 21C13-44 |
| Hot Drill Bushing | 21C13-51 | 21C13-52 | 21C13-53 | 21C13-54 | 21C13-55 | 21C13-56 | 21C13-65 | 21C13-66 | 21C13-67 |
| *Multiple Size Bushing | 21C13-59 | 21C13-59 | 21C13-59 | 21C13-63 | 21C13-63 | -- | -- | -- | -- |

*OPTIONAL Multiple size bushing, cold drills only.
Bushing No. 2 21C13-59 for 3/64, 5/64, 3/32 & 1/8 hole sizes
Bushing No. 2 21C13-63 for 5/32 & 3/16 hole sizes.

*For 1/4" dia. and larger, use chuck 229C1-6 & setscrew 309C20-1. For models CD3H and CDLH, 1/4" dia. and larger, use Guide Heat Bracket 728C1-10.

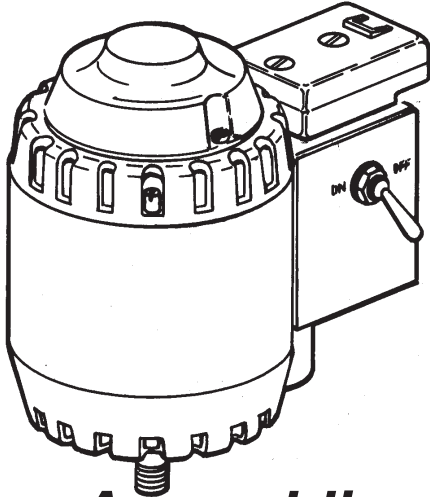
Eastman
Over a Century of Cutting Expertise

Superior 3

Cloth Drill

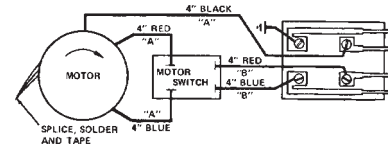
Model CD3, CD3H, CDL, and CDLH

Illustrated Parts List



Motor Assemblies

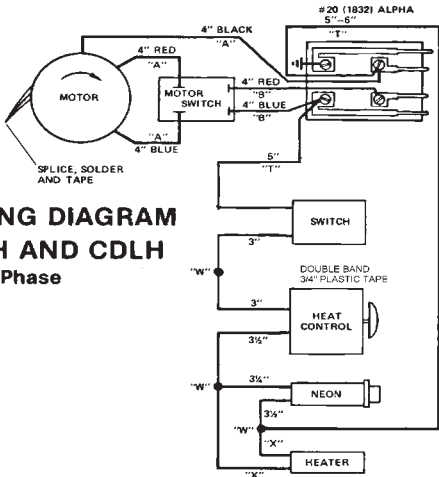
NOTE: Please specify model and serial number of machine when ordering parts



WIRING DIAGRAM CD3 AND CDL
Three Phase

CD3 & CDL
CD3H & CDLH PHASE
CD3 & CDL
CD3H & CDLH PHASE

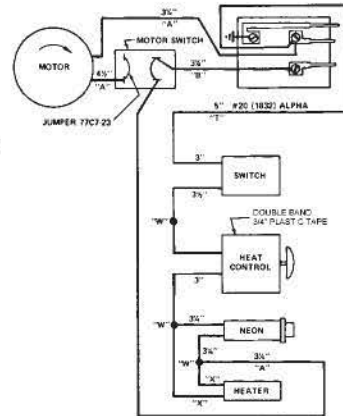
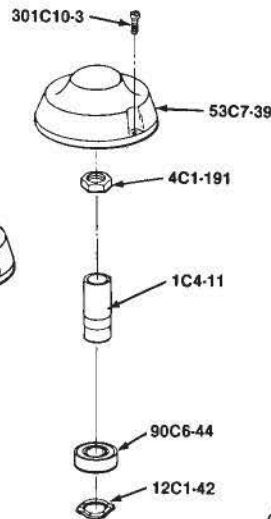
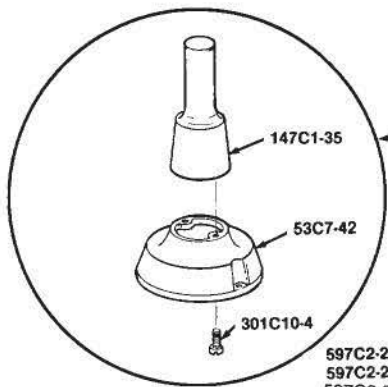
| Part Number | CD3 & CDL | CD3H & CDLH PHASE | CD3 & CDL | CD3H & CDLH PHASE | Description |
|-------------|-----------|-------------------|-----------|-------------------|-------------------------------------|
| 10C2-30 | 1 | 1 | 1 | 1 | Rotor Fan |
| 12C1-34 | 0 | 2 | 0 | 2 | Lock Washer |
| 12C1-42 | 1 | 1 | 1 | 1 | Loading Spring Washer |
| 12C15-90 | 0 | 1 | 0 | 1 | Lock Washer for Control |
| 18C6-31 | 1 | 1 | 1 | 1 | Tolerancing Ring |
| 18C6-38 | 1 | 1 | 1 | 1 | Locating Ring Switch |
| 20C3-32 | 0 | 0 | 4 | 4 | Motor Screw |
| 20C3-36 | 4 | 4 | 0 | 0 | Motor Screw |
| 20C13-91 | 0 | 1 | 0 | 1 | Drive Screw |
| 52C5-164 | 1 | 1 | 1 | 1 | Switch Base |
| 52C5-172 | 0 | 1 | 0 | 1 | Control, Pilot Light, Switch |
| 52C5-181 | 1 | 0 | 1 | 0 | Switch Base |
| 53C2-106 | 1 | 0 | 1 | 0 | Switch Cover |
| 53C7-39 | 1 | 1 | 1 | 1 | Rear Bearing Cover |
| 53C7-42 | 1 | 1 | 1 | 1 | Rear Bearing Cover 11-1/2" |
| 73C7-121 | 2 | 2 | 2 | 2 | Tubing Insulation |
| 90C1-154 | 1 | 1 | 1 | 1 | Upper Bearing Housing |
| 90C2-144 | 1 | 1 | 1 | 1 | Lower Bearing Housing |
| 90C6-43 | 1 | 1 | 1 | 1 | Lower Ball Bearing |
| 90C6-44 | 1 | 1 | 1 | 1 | Upper Ball Bearing |
| 98C4-32 | 0 | 1 | 0 | 1 | Switch Cap |
| 104C1-6 | 0 | 1 | 0 | 1 | Dial Indicator |
| 144C1-10 | 0 | 1 | 0 | 1 | Pilot Light 110v |
| 144C1-11 | 0 | 0 | 0 | 1 | Pilot Light 220v |
| 147C1-35 | 1 | 1 | 1 | 1 | Extension for Cover 11-1/2" |
| 251C1 | 0 | 0 | 0 | 1 | Heat Control 220v |
| 251C1-1 | 0 | 1 | 0 | 0 | Heat Control 110v |
| 300C10-3 | 3 | 3 | 3 | 3 | Screw 6-32 x 5/16 Round Head |
| 300C12-2 | 2 | 2 | 2 | 2 | Screw 8-32 x 3/8 Round head |
| 301C7-3 | 8 | 8 | 8 | 8 | Screw 4-36 x 1/4 Fillister Head |
| 301C10-3 | 2 | 2 | 2 | 2 | Screw 6-32 x 3/8 Fillister Head |
| 301C10-4 | 2 | 2 | 2 | 2 | Screw 6-32 x 1/2 Fillister Head |
| 301C14-7 | 2 | 2 | 2 | 2 | Screw 10-24 x 1 Fillister Head |
| 512C1-122 | 0 | 0 | 1 | 1 | Rotor with Fan |
| 512C1-128 | 1 | 1 | 0 | 0 | Rotor with Fan |
| 514C4-229 | 1 | 1 | 0 | 0 | CD3/Stator w/Band 110v 60cy 3600rpm |
| 514C4-232 | 1 | 1 | 0 | 0 | CD3/Stator w/Band 110v 50cy 3000rpm |
| 514C4-233 | 1 | 1 | 0 | 0 | CD3/Stator w/Band 220v 60cy 3600rpm |
| 514C4-234 | 1 | 1 | 0 | 0 | CD3/Stator w/Band 220v 50cy 3000rpm |
| 514C4-235 | 1 | 1 | 0 | 0 | CDL/Stator w/Band 110v 60cy 3600rpm |
| 514C4-238 | 1 | 1 | 0 | 0 | CDL/Stator w/Band 110v 50cy 3000rpm |
| 514C4-239 | 1 | 1 | 0 | 0 | CDL/Stator w/Band 220v 60cy 3600rpm |
| 514C4-240 | 1 | 1 | 0 | 0 | CDL/Stator w/Band 220v 50cy 3000rpm |
| 514C4-117 | 0 | 0 | 1 | 1 | CD3/Stator w/Band 220v 60cy 3600rpm |
| 514C4-118 | 0 | 0 | 1 | 1 | CD3/Stator w/Band 220v 50cy 3000rpm |
| 514C4-188 | 0 | 0 | 1 | 1 | CDL/Stator w/Band 220v 60cy 3600rpm |
| 514C4-198 | 0 | 0 | 1 | 1 | CDL/Stator w/Band 220v 50cy 3000rpm |
| 537C1-21 | 1 | 1 | 1 | 1 | Rear Brg Cover w/Extension 11-1/2" |
| 580C1-48 | 0 | 1 | 0 | 1 | Toggle Switch |
| 580C1-65 | 0 | 0 | 1 | 1 | Switch for Motor (Three phase) |
| 580C1-70 | 1 | 1 | 0 | 0 | Automatic Cut Out Switch |
| 580C1-85 | 1 | 1 | 0 | 0 | Switch for Motor (Single phase) |
| 597C2-26 | 1 | 1 | 0 | 0 | Automatic Cut Out 60 Cy 3600 rpm |
| 597C2-27 | 1 | 1 | 0 | 0 | Automatic Cut Out 50 Cy 3000 rpm |
| 597C2-28 | 1 | 1 | 0 | 0 | Automatic Cut Out 50 Cy 1800 rpm |
| 626C1-42 | 1 | 0 | 1 | 0 | Switch Bracket w/Switch Base |
| 626C1-43 | 0 | 1 | 0 | 1 | Switch Bracket w/Switch Base |
| 783C1-3 | 1 | 1 | 1 | 1 | Ground Wire Assy. |



WIRING DIAGRAM CD3H AND CDLH
Three Phase

CD3 & CDL
CD3H & CDLH PHASE
CD3 & CDL
CD3H & CDLH PHASE

| Part Number | CD3 & CDL | CD3H & CDLH PHASE | CD3 & CDL | CD3H & CDLH PHASE | Description |
|-------------|-----------|-------------------|-----------|-------------------|-----------------------------|
| 1C4-11 | 0 | 0 | 1 | 1 | Spacer Sleeve |
| 4C1-180 | 4 | 4 | 4 | 4 | Nut |
| 4C1-191 | 1 | 1 | 1 | 1 | Shaft Lock Nut |
| 4C1-192 | 1 | 1 | 1 | 1 | Lower Bearing Nut |
| 4C2-101 | 0 | 1 | 0 | 1 | Wire Nut |
| 4C2-111 | 0 | 1 | 0 | 1 | Speed Nut |
| 8C5-10 | 1 | 1 | 1 | 1 | Automatic Switch Insulation |



**WIRING DIAGRAM
CD3H AND CDLH
Single Phase**

597C2-26 60cy. 3600 R.P.M.
597C2-27 50cy. 3000 R.P.M.
597C2-28

300C12-2

580C1-70

20C3-32

20C3-36

Part of 580C1-48

12C1-34

98C4-32

20C13-91

4C2-101

580C1-48

144C1-10 110V.

144C1-11 220V.

301C7-3

4C2-111

52C5-172

53C2-106

251C1 220V.

251C1-1 110V.

104C1-6

Part of 251C1

251C1-1

12C15-90

301C14-7

90C2-144

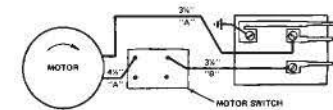
90C6-43

18C6-31

4C1-192

| | | | |
|-----|-----------|--------------------------|--------------|
| CD3 | 514C4-229 | 110V. 60 cy. 3600 R.P.M. | Single Phase |
| | 514C4-232 | 110V. 50 cy. 3000 R.P.M. | |
| | 514C4-233 | 220V. 60 cy. 3600 R.P.M. | |
| | 514C4-234 | 220V. 50 cy. 3000 R.P.M. | |
| | 514C4-117 | 220V. 60cy. 3600 R.P.M. | Three Phase |
| | 514C4-118 | 220V. 50cv. 3000 R.P.M. | |

| | | | |
|-----|-----------|--------------------------|--------------|
| CDL | 514C4-235 | 110V. 60 cy. 3600 R.P.M. | Single Phase |
| | 514C4-238 | 110V. 50 cy. 3000 R.P.M. | |
| | 514C4-239 | 220V. 60 cy. 3600 R.P.M. | |
| | 514C4-240 | 220V. 50 cy. 3000 R.P.M. | |
| | 4-188 | 220V. 60 cy. 3600 R.P.M. | Three Phase |
| | 514C4-198 | 220V. 50 cy. 3000 R.P.M. | |



**WIRING DIAGRAM CD3 AND CDL
Single Phase**

NOTE: When ordering Single Phase Stator & Bands for machines prior to 1989, part numbers 20C3-36 and 512C1-128 must also be ordered.

**WIRING DIAGRAM CD3 AND CDL
Single Phase**

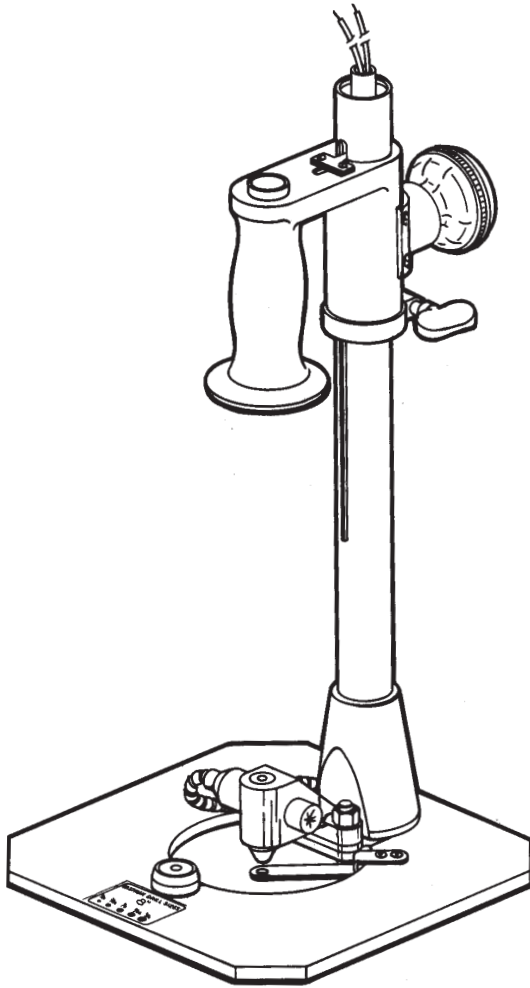
Eastman
Over a Century of Cutting Expertise

Superior 5

Cloth Drill

Model CD3 and CD3H

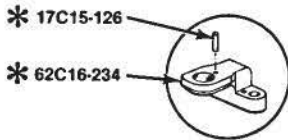
Illustrated Parts List



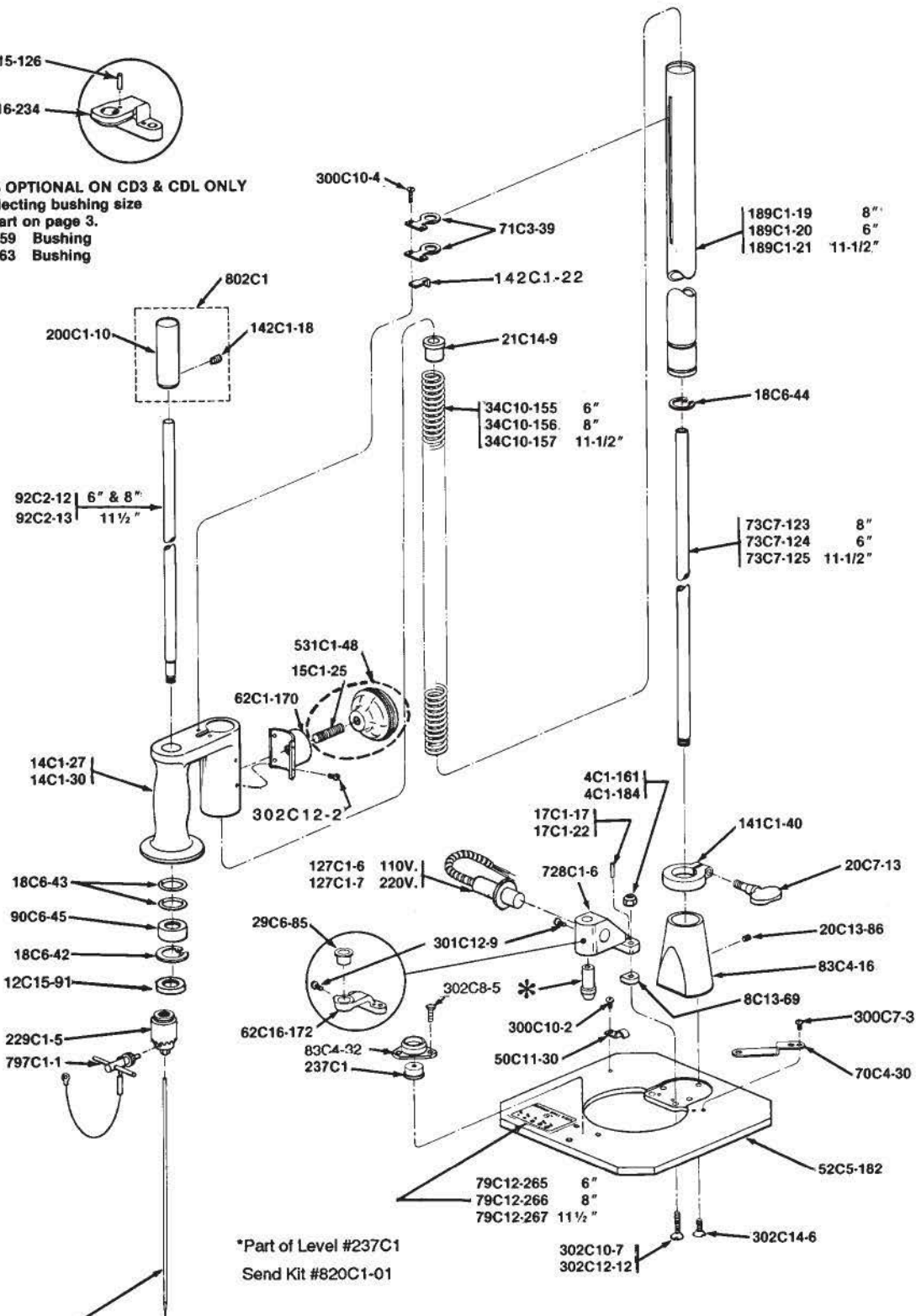
Standard and Base Plate Assembly

NOTE: Please specify model and serial number of machine when ordering parts.

| Part Number | No. Req'd | | Description |
|-------------|-----------|------|---|
| | CD3 | CD3H | |
| 4C1-161 | 2 | 0 | Flex Nut |
| 4C1-184 | 0 | 2 | Stop Nut |
| 8C13-69 | 0 | 2 | Heat Insulator |
| 12C15-91 | 1 | 1 | Spacing Washer |
| 14C1-27 | 1 | 1 | Handle Grip |
| 14C1-30 | 1 | 1 | Handle Grip |
| 15C1-25 | 1 | 1 | Machine Handle Stud |
| 17C1-17 | 2 | 0 | Dowel Pin |
| 17C1-22 | 0 | 2 | Dowel Pin |
| 17C15-126 | 1 | 1 | Dowel Pin |
| 18C6-42 | 1 | 1 | Retaining Ring |
| 18C6-43 | 2 | 2 | Rubber "O" Ring |
| 18C6-44 | 1 | 1 | Retaining Ring |
| 20C7-13 | 1 | 1 | Thumb Screw |
| 20C13-86 | 2 | 2 | Set Screw |
| 21C14-9 | 1 | 1 | Bushing For Spring |
| 29C6-85 | 1 | 0 | Adaptor For Bushing |
| 34C10-155 | 1 | 1 | Spring For 6" Post |
| 34C10-156 | 1 | 1 | Spring For 8" Post |
| 34C10-157 | 1 | 1 | Spring For 11-1/2" Post |
| 50C11-30 | 0 | 1 | Cable Clamp |
| 52C5-155 | 1 | 1 | Level Base |
| 52C5-182 | 1 | 1 | Base Plate |
| 55C4-95 | 0 | 1 | Spacer For Heating Element |
| 62C1-170 | 1 | 1 | Handle Bracket |
| 62C16-172 | 1 | 0 | Lower Guide Bracket |
| 62C16-234 | 1 | 1 | Lower Guide Bracket |
| 70C4-30 | 1 | 1 | Locator Guide |
| 70C3-39 | 2 | 2 | Spring Retainer |
| 73C7-123 | 0 | 1 | 8" Tube For Lead Wire |
| 73C7-124 | 0 | 1 | 6" Tube For Lead Wire |
| 73C7-125 | 0 | 1 | 11-1/2" Tube For Lead Wire |
| 79C12-265 | 1 | 1 | 6" Drill Size Decal |
| 79C12-266 | 1 | 1 | 8" Drill Size Decal |
| 79C12-267 | 1 | 1 | 11-1/2" Drill Size Decal |
| 83C4-32 | 1 | 1 | Level Flange |
| 83C4-16 | 1 | 1 | Flange For Post |
| 90C6-45 | 1 | 1 | Spindle Ball Bearing |
| 92C2-12 | 1 | 1 | Spindle 6" and 8" |
| 92C2-13 | 1 | 1 | Spindle 11-1/2" |
| 127C1-6 | 0 | 1 | Heat Element 110V. |
| 127C1-7 | 0 | 1 | Heat Element 220V. |
| 141C1-40 | 1 | 1 | Gauge |
| 142C1-18 | 1 | 1 | Key For Driver |
| 142c1-22 | 1 | 1 | Key For Handle |
| 189C1-19 | 1 | 1 | 8" Post |
| 189C1-20 | 1 | 1 | 6" Post |
| 189C1-21 | 1 | 1 | 11-1/2" Post |
| 200C1-10 | 1 | 1 | Driver Only |
| 229C1-5 | 1 | 1 | Chuck |
| 237C1 | 1 | 1 | Bullseye Vial |
| 300C7-3 | 2 | 2 | Screw, 4-36 x 1/4 Round Head |
| 300C10-2 | 0 | 1 | Screw, 6-32 x 1/4 Round Head |
| 300C10-4 | 2 | 2 | Screw, 6-32 x 3/8 Round Head |
| 301C12-9 | 0 | 1 | Screw, 8-32 x 1/4 Fillister Hd. (Stainless Steel) |
| 302C12-2 | 4 | 4 | Screw, 8-32 x 5/16 Flat Head |
| 302C10-7 | 2 | 0 | Screw, 6-32 x 5/8 Flat Head |
| 302c12-12 | 0 | 2 | Screw, 8-32 x 1 Flat Head |
| 302C14-6 | 3 | 3 | Screw, 10-24 x 5/8 Flat Head |
| 531C1-48 | 1 | 1 | Machine Handle |
| 728C1-6 | 0 | 1 | Guide Heat Bracket |
| 797C1-1 | 1 | 1 | Key for Chuck and Holder |
| 802C1 | 1 | 1 | Driver with Key |
| 302C8-5 | 3 | 3 | Screw, #4-40 x 1/4 Flat Head |



* PARTS OPTIONAL ON CD3 & CDL ONLY
 For selecting bushing size
 see chart on page 3.
 21C13-59 Bushing
 21C13-63 Bushing



* SEE PAGE 3
 FOR DRILL OR AWL SELECTION TABLE
 AND DRILL GUIDE BUSHING TABLE

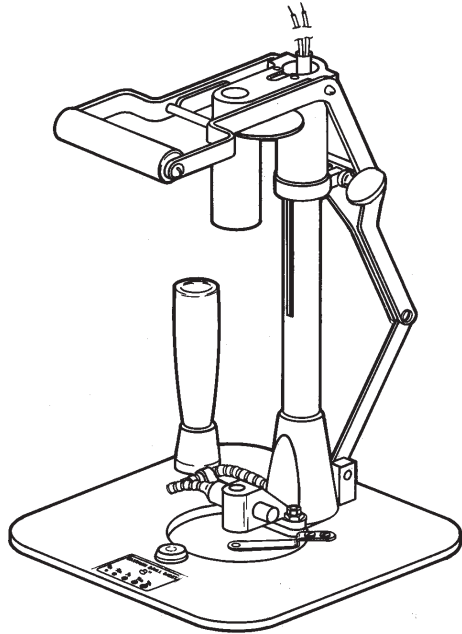
Eastman®
 Over a Century of Cutting Expertise

Superior⁷

Cloth Drill

Model CD3 and CD3H

Illustrated Parts List

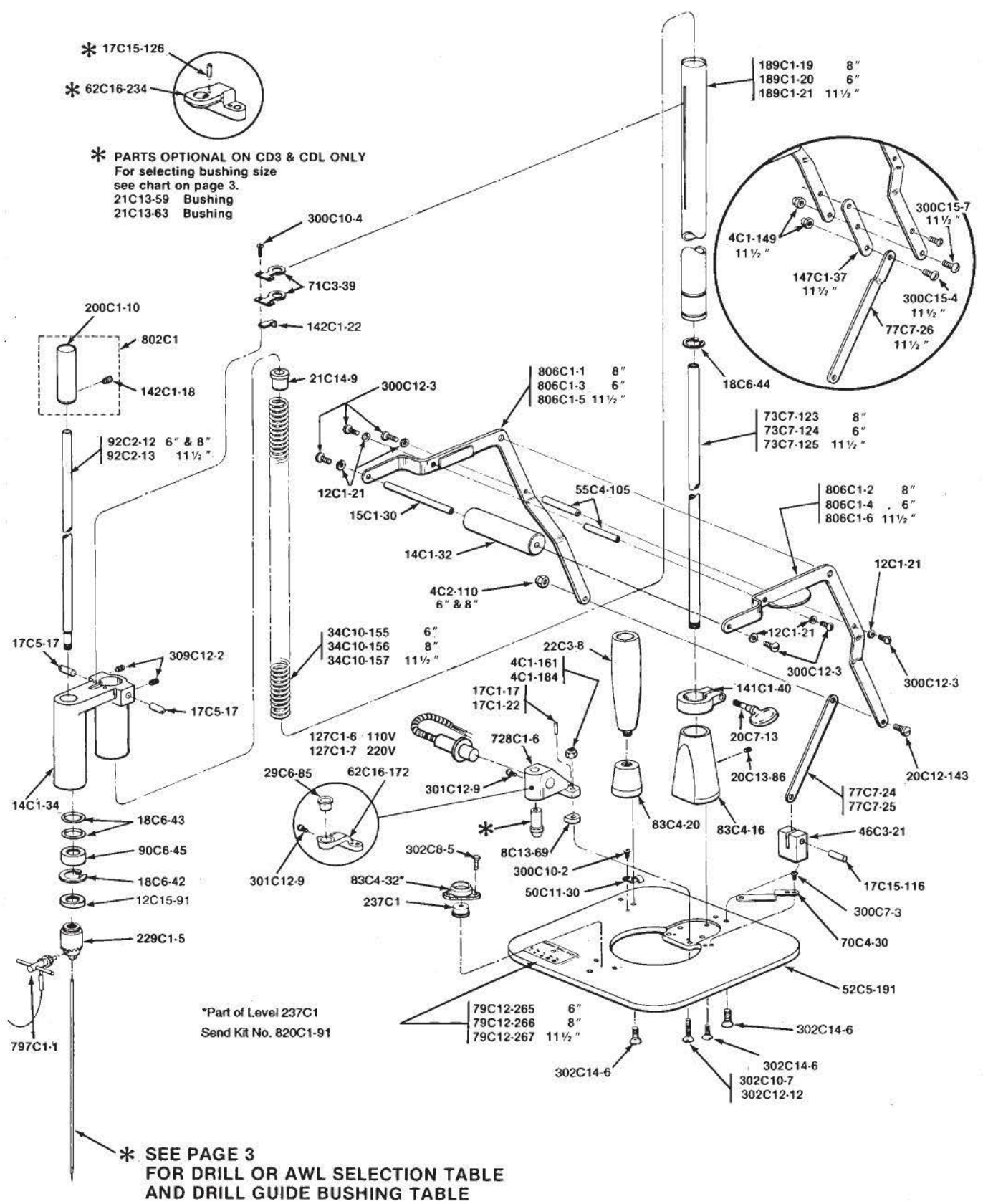


Standard and Base Plate Assembly

NOTE: Please specify model and serial number of machine when ordering parts

| Part Number | No. Req'd | | Description |
|-------------|-----------|------|--------------------|
| | CDL | CDLH | |
| 4C1-149 | 3 | 3 | Elastic Stop Nut |
| 4C1-161 | 2 | 0 | Flex Nut |
| 4C1-184 | 0 | 2 | Elastic Stop Nut |
| 4C2-110 | 1 | 1 | Elastic Stop Nut |
| 8C13-69 | 0 | 1 | Heat Insulator |
| 12C1-21 | 6 | 6 | Lock Washer |
| 12C15-91 | 1 | 1 | Spacing Washer |
| 14C1-32 | 1 | 1 | Operating Handle |
| 14C1-34 | 1 | 1 | Handle Grip w/Lugs |
| 15C1-30 | 1 | 1 | Stud For Handle |
| 17C1-17 | 1 | 0 | Dowel Pin |
| 17C1-22 | 0 | 1 | Dowel Pin |
| 17C5-17 | 2 | 2 | Pivot Point |
| 17C15-116 | 1 | 1 | Roll Pin |

| Part Number | No. Req'd | | Description |
|-------------|-----------|------|---|
| | CDL | CDLH | |
| 17C15-126 | 1 | 1 | Dowel Pin |
| 18C6-42 | 1 | 1 | Retaining Ring |
| 18C6-43 | 2 | 2 | Rubber "O" Ring |
| 18C6-44 | 1 | 1 | Retaining Ring |
| 20C7-13 | 1 | 1 | Thumb Screw |
| 20C12-143 | 1 | 1 | Pivot Screw 6" & 8" Drills |
| 20C13-86 | 2 | 2 | Set Screw |
| 21C14-9 | 1 | 1 | Bushing For Spring |
| 22C3-8 | 1 | 1 | Tapered Handle |
| 29C6-85 | 1 | 0 | Adaptor For Bushing |
| 34C10-155 | 1 | 1 | Spring 6" Drill |
| 34C10-156 | 1 | 1 | Spring 8" Drill |
| 34C10-157 | 1 | 1 | Spring 11-1/2" Drill |
| 46C3-21 | 1 | 1 | Block For Link |
| 50C11-30 | 0 | 1 | Cable Clamp |
| 52C5-191 | 1 | 1 | Base |
| 55C4-95 | 0 | 1 | Spacer For Heating Element |
| 55C4-105 | 2 | 2 | Spacer Lever Handle |
| 62C16-172 | 1 | 0 | Lower Guide Bracket |
| 62C16-234 | 1 | 0 | Lower Guide Bracket |
| 70C4-30 | 1 | 1 | Locator Guide |
| 71C3-39 | 2 | 2 | Spring Retainer |
| 73C7-123 | 1 | 1 | 8" Tube For Lead Wire |
| 73C7-124 | 1 | 1 | 6" Tube For Lead Wire |
| 73C7-125 | 1 | 1 | 11-1/2" Tube For Lead Wire |
| 77C7-24 | 1 | 1 | 8" Link |
| 77C7-25 | 1 | 1 | 6" Link |
| 77C7-26 | 1 | 1 | 11-1/2" Link |
| 79C12-265 | 1 | 1 | 6" Drill Size Decal |
| 79C12-266 | 1 | 1 | 8" Drill Size Decal |
| 79C12-267 | 1 | 1 | 11-1/2" Drill Size Decal |
| 83C4-32 | 1 | 1 | Level Flange |
| 83C4-16 | 1 | 1 | Flange For Post |
| 83C4-20 | 1 | 1 | Flange For Handle |
| 90C6-45 | 1 | 1 | Spring Ball Bearing |
| 92C2-12 | 1 | 1 | 6" & 8" Spindle |
| 92C2-13 | 1 | 1 | 11-1/2" Spindle |
| 127C1-6 | 0 | 1 | 110V Heating Element |
| 127C1-7 | 0 | 1 | 220V Heating Element |
| 141C1-40 | 1 | 1 | Gauge |
| 142C1-18 | 1 | 1 | Key For Driver |
| 142C1-22 | 1 | 1 | Key For Handle |
| 147C1-37 | 1 | 1 | 11-1/2" Extension For Handle Lever |
| 189C1-19 | 1 | 1 | 8" Post |
| 189C1-20 | 1 | 1 | 6" Post |
| 189C1-21 | 1 | 1 | 11-1/2" Post |
| 200C1-10 | 1 | 1 | Driver Only |
| 229C1-5 | 1 | 1 | Chuck |
| 237C1 | 1 | 1 | Bullseye Vial |
| 300C7-3 | 2 | 2 | Screw, 4-36 x 1/4 Round Head |
| 300C10-2 | 1 | 1 | Screw, 6-32 x 1/4 Round Head |
| 300C10-4 | 2 | 2 | Screw, 6-32 x 3/8 Round Head |
| 300C12-3 | 6 | 6 | Screw, 8-32 x 3/8 Round Head |
| 300C15-4 | 1 | 1 | Screw 10-32 x 1/2 Round Head 11-1/2" only |
| 300C15-7 | 2 | 2 | Screw 10-32 x 5/8 Flat Head |
| 302C12-12 | 2 | 2 | Screw 8-32 x 1" Flat Head |
| 302C14-6 | 7 | 7 | Screw 10-24 x 5/8 Flat Head |
| 301C12-9 | 1 | 1 | Screw 8-32 x 9/16 Fillister Head (Stainless Stl.) |
| 302C10-7 | 2 | 2 | Screw 6-32 x 5/8 Flat Head |
| 309C12-2 | 2 | 2 | Screw 8-32 x 5/16 Socket Set Screw |
| 728C1-6 | 1 | 1 | Guide Heat Bracket |
| 797C1-1 | 1 | 1 | Key for Chuck and Holder |
| 802C1 | 1 | 1 | Driver with Key |
| 806C1-1 | 1 | 1 | L.H. Handle Lever Assembly 8" Drill |
| 806C1-2 | 1 | 1 | R.H. Handle Lever Assembly 8" Drill |
| 806C1-3 | 1 | 1 | L.H. Handle Lever Assembly 6" Drill |
| 806C1-4 | 1 | 1 | R.H. Handle Lever Assembly 6" Drill |
| 806C1-5 | 1 | 1 | L.H. Handle Lever Assembly 11-1/2" Drill |
| 806C1-6 | 1 | 1 | R.H. Handle Lever Assembly 11-1/2" Drill |
| 302C8-5 | 3 | 3 | Screw 4-40 x 1/4 Flat Head |

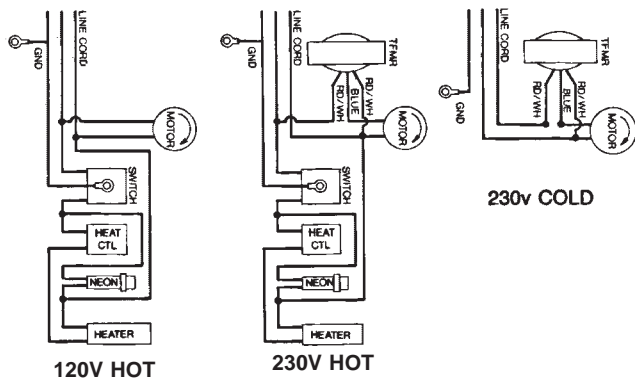


Super Lite Cloth Drill

Illustrated Parts List

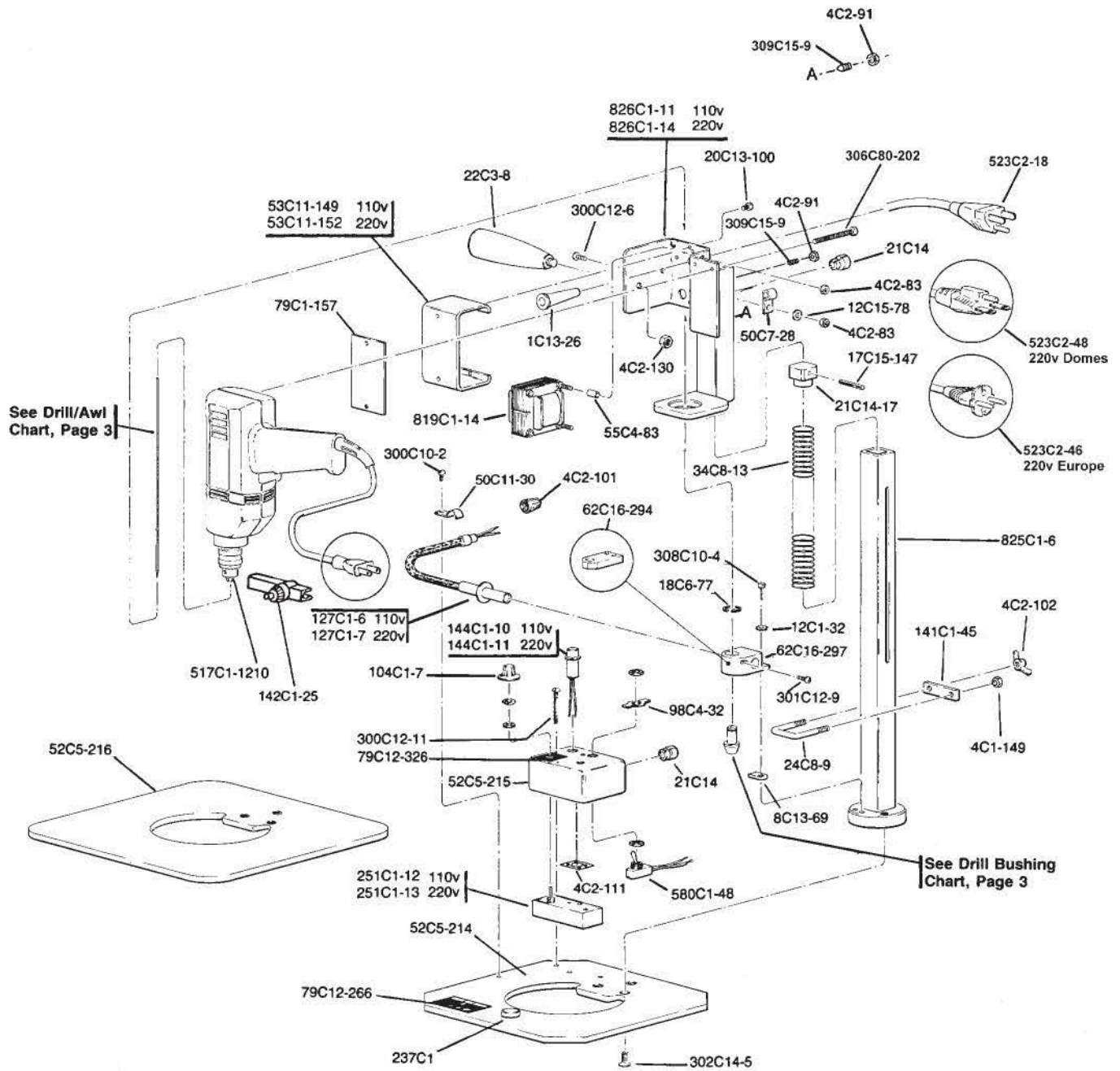


| Part Number | No. Req'd | | | | Description |
|-------------|-----------|----------|-------|-------|------------------------------------|
| | 110vC | 110vH | 220vC | 220vH | |
| 1C13-26 | 0 | 1 | 1 | 1 | Rubber Cord Restraint |
| 4C1-149 | 1 | 1 | 1 | 1 | 10-32 Elastic Stop Nut |
| 4C2-83 | 0 | 0 | 2 | 2 | 8-32 Hex Nut |
| 4C2-91 | 1 | 1 | 1 | 1 | Hex Nut |
| 4C2-101 | 0 | 6 | 5 | 6 | Wire Nut |
| 4C2-102 | 1 | 1 | 1 | 1 | 10-32 Wing Nut |
| 4C2-106 | 0 | 2 | 0 | 2 | 4-40 Hex Nut |
| 4C2-111 | 0 | 1 | 0 | 1 | Nut, Pilot Light |
| 4C2-130 | 1 | 1 | 1 | 1 | 3/8-24 Hex Nut |
| 8C13-69 | 0 | 2 | 0 | 2 | Heat Insulator |
| 12C1-32 | 2 | 2 | 2 | 2 | Washer, External Lock #6 |
| 12C15-78 | 0 | 1 | 1 | 1 | Washer Flat #8 |
| 17C15-147 | 1 | 1 | 1 | 1 | Roll Pin |
| 18C6-77 | 1 | 0 | 1 | 0 | Ring, Retaining E-type |
| 20C13-100 | 0 | 2 | 2 | 2 | Screw, Binding Head |
| 21C14 | 0 | 3 | 1 | 3 | Cord Restraint |
| 21C14-17 | 1 | 1 | 1 | 1 | Spring, Bushing |
| 22C3-8 | 1 | 1 | 1 | 1 | Handle, Tapered |
| 24C8-9 | 1 | 1 | 1 | 1 | Bolt, "U" |
| 34C8-13 | 1 | 1 | 1 | 1 | Spring, Return #8 |
| 34C8-14 | 0 | 0 | 1 | 1 | Spring, Return, 220v |
| 50C7-28 | 0 | 1 | 1 | 1 | Clamp Cord 3/16" Dia. |
| 50C11-30 | 0 | 1 | 0 | 1 | Clamp, Cable |
| 52C5-214 | 1 | 1 | 1 | 1 | Plate Base 8" |
| 52C5-215 | 0 | 1 | 0 | 1 | Base, Control Switch |
| 52C5-216 | | Optional | | | Base Plate 9-1/2" |
| 53C11-149 | 0 | 1 | 0 | 0 | Cover, Wiring 110v Hot |
| 53C11-152 | 0 | 0 | 1 | 1 | Cover, Transformer 220v |
| 55C4-83 | 0 | 0 | 2 | 2 | Spacer, Transformer |
| 62C16-294 | 1 | 0 | 1 | 0 | Lower Guide Bracket, Cold |
| 62C16-297 | 0 | 1 | 0 | 1 | Lower Guide Bracket, Hot |
| 79C1-157 | 1 | 1 | 1 | 1 | Plate, Name |
| 79C12-266 | 1 | 1 | 1 | 1 | Decal, Drill Size |
| 79C12-326 | 0 | 1 | 0 | 1 | Decal, Dial Indicator |
| 98C4-32 | 0 | 1 | 0 | 1 | Cap, Switch |
| 104C1-7 | 0 | 1 | 0 | 1 | Knob |
| 127C1-6 | 0 | 1 | 0 | 0 | Heat Element 110v |
| 127C1-7 | 0 | 0 | 0 | 1 | Heat Element 220v |
| 141C1-45 | 1 | 1 | 1 | 1 | Gage, Stop |
| 142C1-25 | 1 | 1 | 1 | 1 | Chuck Key |
| 144C1-10 | 0 | 1 | 0 | 0 | Pilot Light, 110v Hot |
| 144C1-11 | 0 | 0 | 0 | 1 | Pilot Light, 220v Hot |
| 237C1 | 1 | 1 | 1 | 1 | Vial Bullseye |
| 251C1-12 | 0 | 1 | 0 | 0 | Heat, Control, Variable 110v |
| 251C1-13 | 0 | 0 | 0 | 1 | Heat, Control, Variable 220v |
| 251C2-1 | 0 | 0 | 1 | 1 | Voltage, Reducer 220v |
| 262C1-9 | 0 | 0 | 1 | 1 | Fuse |
| 300C10-2 | 0 | 1 | 0 | 1 | Screw, 6-32 x 1/4, Round Head |
| 300C12-6 | 0 | 1 | 1 | 1 | Screw, 8-32 x 1/2, Round Head |
| 300C12-11 | 0 | 2 | 0 | 2 | Screw, 8-32 x 1-3/4, Round Head |
| 301C12-9 | 0 | 1 | 0 | 1 | Screw, 8-32 x 1/4, Fillister Head |
| 302C14-5 | 3 | 3 | 3 | 3 | Screw, 10-24 x 1/2 Flat Head |
| 306C80-202 | 2 | 2 | 2 | 2 | Screw, 6 x 2" Type AB |
| 308C10-4 | 2 | 2 | 2 | 2 | Screw, 6-32 x 5/8, Socket Head Cap |
| 308C10-5 | 2 | 2 | 2 | 2 | Screw 6-32 x 1 Socket Head Cap |
| 309C15-9 | 1 | 1 | 1 | 1 | Brass Tipped Setscrew |
| 517C1-1210 | 1 | 1 | 1 | 1 | Motor, Unit Drill |
| 523C2-18 | 0 | 1 | 0 | 0 | Cord, Hot, 110v |
| 523C2-46 | 0 | 0 | 1 | 1 | Cord, 220v Europe, Hot and Cold |
| 523C2-48 | 0 | 0 | 1 | 1 | Cord, 220V Domestic, Hot and Cold |
| 580C1-48 | 0 | 1 | 0 | 1 | Switch |
| 819C1-14 | 0 | 0 | 1 | 1 | Voltage Reducer, 220v |
| 825C1-6 | 1 | 1 | 1 | 1 | Post, Assembly |
| 826C1-11 | 1 | 1 | 0 | 0 | Motor Support Assembly, 110v |
| 826C1-14 | 0 | 0 | 1 | 1 | Motor Support Assembly, 220v |



WIRING DIAGRAMS

CAUTION: Read instructions carefully before starting motor. Be sure that voltage is the same as stamped on nameplate.



Eastman

Over a Century of Cutting Expertise

Superior

Super Lite Cloth Drill Operating Instructions

OPERATION

Set U-Stop Gage to correspond to height of fabric, so that drill will not penetrate table. Be certain Gage is tightened firmly before operating drill.

Position Super Lite Drill Marker over mark, using drill point as indicator.

To start, press trigger and slowly push drill into fabric. DO NOT force drill or awl thru cloth; damage to drill or motor may result.

Drill motor may be locked in the on position by engaging drill trigger and sliding lock mechanism forward (located behind trigger on drill handle). Drill lock may be disengaged by pressing and releasing drill trigger.

NOTE: Disconnect machine from power source before servicing.

MAINTENANCE

Periodically check to make sure all mounting screws are securely tightened before operating machine.

To change the drill

Lay drill marker on it's side. Loosen drill chuck with key provided and slide drill down and out through guide bushing.

To remove cold drill guide bushing; snap out 'E' ring (18C6-77) and slide out bushing.

To remove hot drill guide bushing; loosen set screw (300C12-9) three turns and slide out bushing.

Select desired drill/awl and matching bushing. Replace guide bushing in reverse order as above. Slide new drill/awl up through bushing and securely tighten into chuck using the supplied chuck key.

Chuck key should be stored on power cord by snapping it into position near plug handle.

CAUTION: DO NOT operate drill marker with chuck key loose in drill. Serious physical injury may result.

Hot Drill

Drill temperature is variable to accommodate all types of material requiring hot drill marking.

To increase temperature: turn heater dial clockwise.

CAUTION: Safety glasses should be worn at all times whenever operating or servicing this equipment, or serious physical injury may result.

Magnum Punch Perforator Model MP2 Operating Instructions

PREPARATION:

Eastman Machine Co. recommends 40-50 lb (.005"-.006" thick) NON-OILED Kraft paper be used for pattern making. Otherwise, operator may need to adjust punch depth for specific material being used.

For best results, table top must be flat and smooth. Cover table with hard rubber pad (191C1-36) to ensure long life of punch. Replace pad frequently to maintain ideal working surface.

CAUTION: Before operating perforator, make certain electrical power source is the same as that indicated on the number plate. Disconnect machine from power source before servicing.

OPERATION

Magnum perforator is ready to operate when power attachment plug is connected; there is no "ON-OFF" switch.

NOTE: Use caution when connecting power supply to Perforator; even slight rotation of rubber wheel may cause perforator to punch. KEEP HANDS CLEAR OF RUBBER WHEEL AND PUNCH ROD AT ALL TIMES.

To move perforator into position, pull switch lever up with finger. This prevents punching when machine is moved.

For single punch, to set starting point, push switch lever down.

To start perforating; release switch lever and move Magnum along line to be marked. Use guide wire or spring guide to follow line. If desired, either guide wire or spring guide may be removed.

After pattern has been completely perforated and checked, place on top of lay and secure to prevent form shifting. Use pattern duster to spread marking powder along perforated line. Use marking powder sparingly; too much powder will distort the line, causing difficulty when following line with cutting machine.

Magnum Punch Perforator

Model MP2 Operating Instructions

SERVICE & ADJUSTMENTS

Replacing Punch

Remove punch by inserting small Drift Punch into punch, and tapping Drift Punch lightly to loosen punch.

Install punch by placing new punch on tip of punch rod. Insert Drift Punch (230C1) over tip and tap drift lightly to seat punch onto rod.

If punch becomes loose on punch rod, remove punch and tap lightly on it's side to reduce diameter of shaft opening causing it to fit more snugly on punch rod.

Adjust Depth of Punch

Remove top cover by removing fillister head screw (301C10-8). Loosen 1/2" hex nut (4C2-120) on top of solenoid. Turn adjusting screw clockwise to increase depth of punch, counterclockwise to decrease depth of punch. One complete turn of adjusting screw equals approx. 1/32" depth adjustment.

To test adjustment; place 1/2" nut driver over stop nut and strike end of nut driver with palm of hand. Punch should be set only deep enough to penetrate through material being punched, this allows for maximum speed of perforation.

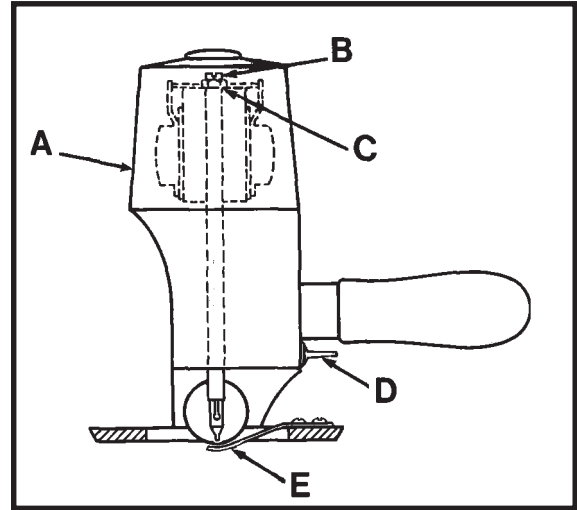
If your pattern paper is very thick, set punch depth deeper. This will provide maximum punching power but speed of punching will be reduced.

When adjustment is satisfactory; hold adjusting screw stationary and tighten 1/2" hex nut firmly.

TROUBLESHOOTING

- Machine does not punch hard enough/Loss of power:
 - Screws holding solenoid to housing are loose causing misalignment of punch.
 - Punch depth set too shallow.
 - Punch dull; replace or sharpen punch.
 - Check line voltage: 105v minimum for 110v; 210v minimum for 220v rating.
- Machine rocks on table surface/proper punch depth cannot be obtained/whenever operating on hard surface:
 - Retract rubber wheel into baseplate, as described.

Remove baseplate by loosening flathead screws (302C15-4) from bottom. Insert two washers (12C11-72) one at each screw, between baseplate and housing. Replace baseplate screws with socket head screws (302C15-8).

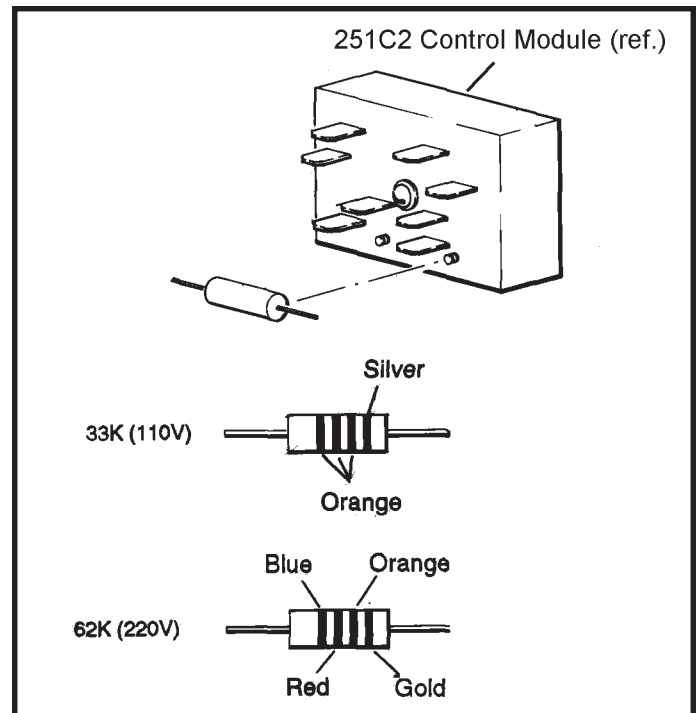


CAUTION:

DO NOT operate this equipment unless baseplate is flat on table surface. Serious personal injury may result.

CHANGING VOLTAGE OF CONTROL MODULE

Use low wattage soldering iron to desolder and remove old resistor and solder new resistor in it's place. Refer to illustration to confirm value of resistors.



Eastman®

Over a Century of Cutting Expertise

Superior

Magnum Punch Perforator

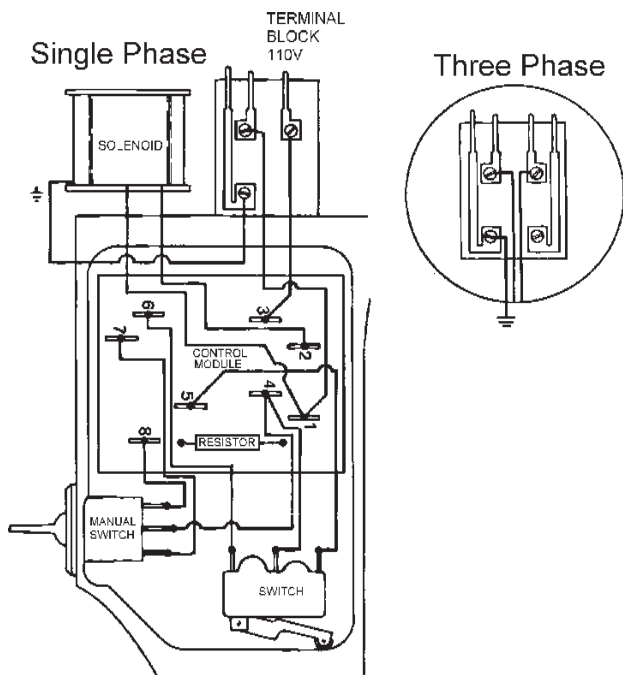
Model MP2

Illustrated Parts List

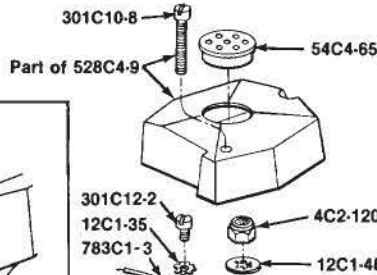
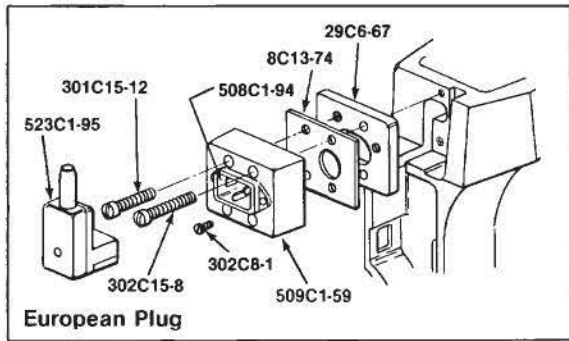


NOTE: Please specify model and serial number of machine when ordering parts

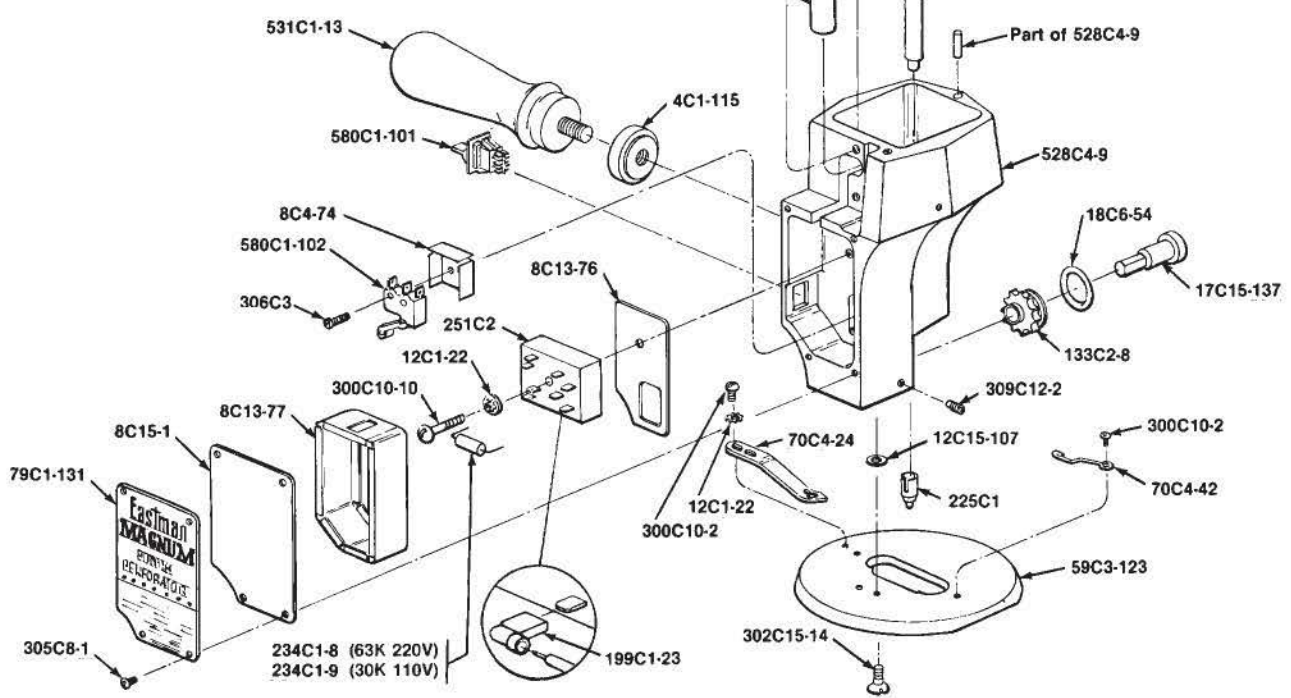
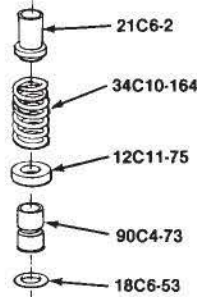
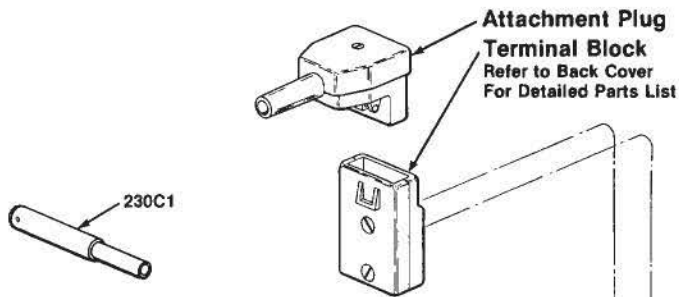
| Part Number | No. Req'd | Description |
|----------------------|-----------|--|
| 4C1-115 | 1 | Locknut, Handle |
| 4C2-120 | 1 | Nut, Elastic, Stop, Hex 5/16 x 24 |
| 8C4-74 | 1 | Switch, Insulation |
| 8C13-76 | 1 | Housing, Insulation |
| 8C13-77 | 1 | Housing, Insulation |
| 8C15-1 | 1 | Cover, Insulation |
| 12C1-22 | 3 | Lock Washer, Ext. Tooth #6 |
| 12C1-35 | 4 | Lock Washer, Ext. Tooth #8 |
| 12C1-48 | 1 | Lock Washer, Int. Tooth 5/16 |
| 12C11-75 | 1 | Spring Washer |
| 12C15-107 | 2 Opt | Spacer Washer |
| 17C15-137 | 1 | Wheel Pin |
| 18C6-53 | 1 | O'Ring, Style #2-205 |
| 18C6-54 | 1 | Drive Ring 9/16 x 1-1/16 x 1/4 |
| 21C6-2 | 1 | Shoulder Bushing |
| 34C10-164 | 1 | Spring |
| 54C4-65 | 1 | Vent Plug |
| 59C3-123 | 1 | Flat Plate |
| 70C4-24 | 1 | Guide Perforator |
| 70C4-42 | 1 | Guide Wire |
| 73C7-93 | 1 | Tubing Front Bearing |
| 79C1-131 | 1 | Number, Plate |
| 90C4-73 | 1 | Plunger, Bearing |
| 118C1-4 | 1 | Rod, Plunger |
| 133C2-8 | 1 | Wheel with Sprocket |
| 199C1-23 | 8 | Lug Terminal |
| 225C1 | 1 | Punch 1/16 Dia. |
| 230C1 | 1 | Drift Punch |
| 234C1-8 | 1 | Resistor, (63K 220V) |
| 234C1-9 | 1 | Resistor, (30K 110V) |
| 251C2 | 1 | Control Module |
| 300C10-2 | 3 | Screw, 6-32 x 1/4, Round Head |
| 301C10-8 | 1 | Screw, 6-32 x 1-1/4, Fillister Head |
| 300C10-10 | 1 | Screw, 6-32 x 1, Round Head |
| 301C12-2 | 4 | Set Screw, 8-32 x 5/16, Fillister Head |
| 302C15-14 | 2 | Screw, 10-32 x 7/16, Flat Head |
| 305C8-1 | 4 | Screw, 4-40 x 1/14, Binding Head |
| 306C3 | 2 | Screw, 2-56 x 3/8, Pan Head |
| 309C12-2 | 1 | Set Screw, 8-32 x 5/16, Flat Point |
| 528C4-9 | 1 | Standard and Cover |
| 531C1-13 | 1 | Handle |
| 580C1-101 | 1 | Switch, Paddle 2 Pole |
| 580C1-102 | 1 | Switch Micro Type 1052 |
| 692C2-11 | 1 | Solenoid, 115V 60 Hz |
| 692C2-12 | 1 | Solenoid, 230V 60Hz |
| 692C2-13 | 1 | Solenoid, 110V 50Hz |
| 692C2-14 | 1 | Solenoid, 220V 50Hz |
| 783C1-3 | 1 | Ground Wire Assy |
| European Plug | | |
| 8C13-74 | 1 | Insulation, Terminal Block |
| 29C6-67 | 1 | Adapter Plate |
| 302C15-8 | 2 | Screw, 10-32 x 1-1/8 Fillister Head |
| 301C15-12 | 2 | Screw, 10-32 x 1-1/8 Fillister Head |
| 302C88-1 | 2 | Screw, 4-40 x 3/8 Flat Head |
| 508C1-94 | 1 | Terminal Block, European, (Male Plug) |
| 509C1-59 | 1 | Terminal Block Adapter |
| 523C1-95 | 1 | 90 deg Angle Attachment Plug |



Wiring Diagram



| | |
|----------|------------------|
| 692C2-11 | 115 Volts 60 Hz. |
| 692C2-12 | 230 Volts 60 Hz. |
| 692C2-13 | 110 Volts 50 Hz. |
| 692C2-14 | 220 Volts 50 Hz. |



Eastman
Over a Century of Cutting Expertise
Superior

Threadmarker

Model LTM

Operating Instructions

Care And Operation

The threadmarking machines are intended to be used for marking pockets, etc. on lays of material such as woolens where the electric drilling machines are not practical due to the holes closing immediately after the drill is removed.

THREADING THE MACHINE

Thread from spool through thread eye "C" to the thread hole "D" in the rear of the thread cutter; then to the needle eye "H". Thread needle from the spool side of the machine.

OPERATION OF THE MACHINE

After the material has been cut and marked with chalk, slide the front beveled portion "F" on the threadmarker beneath the lay. Press looper locking latch (located on the opposite side) down to set the looper. The operation of setting the looper must be performed before every needle stroke. Pull handle "B" down until stop "J" makes contact with the threadmaker housing. This action releases the looper contained in the base of the machine. By slowly retracting the needle a loop is formed and caught by the looper. The end of the thread is held firmly by the looper and as the machine is withdrawn from the lay, about 15 to 18 inches of thread should be stripped from the spool and cut off with the thread cutter "E". This operation is continued until all marked positions have been completed. Each layer of cloth is clipped with shears between each layer, the operator leaving about 3/4 to 1 inch of thread in each layer of cloth. If the thread is clipped too short, it may fall out subsequent handling.

TO REMOVE NEEDLE

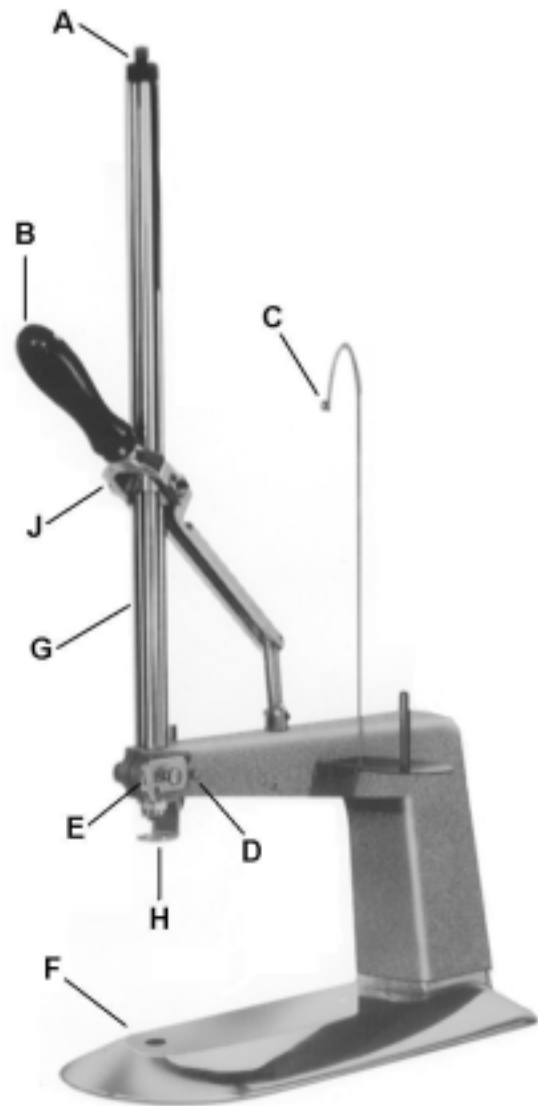
Remove knurled cap "A" from top of machine-turn counterclockwise to remove. Lift needle rod and needle assembly clear from the machine. Loosen bottom setscrew and remove the needle from rod.

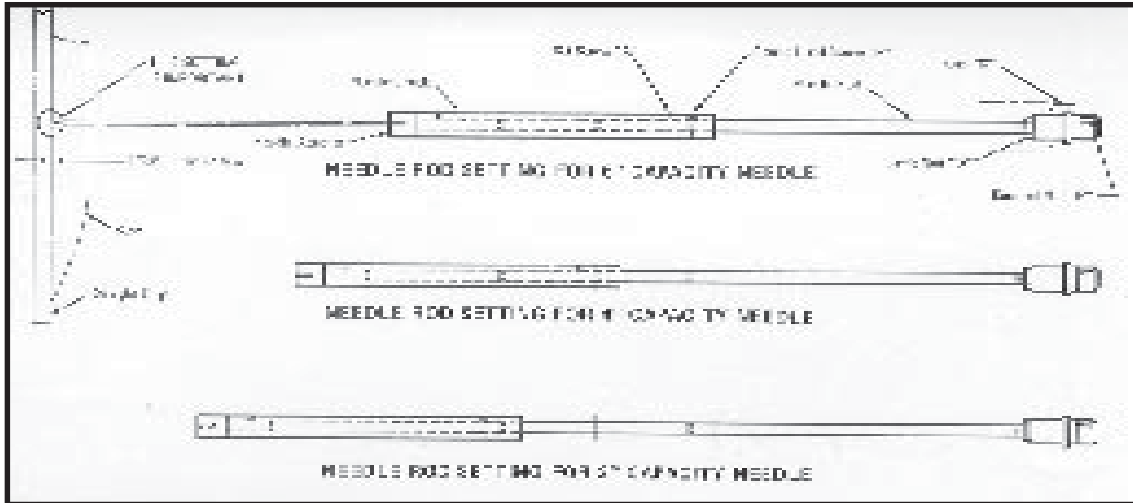
OILING

Oil rod and tube at "G" twice a week.

THREAD

It is suggested that a good grade of button hole gimp be used. It can readily be understood that if thread is too weak, forcing the needle through such a great thickness of material will result in thread breakage.





SETTING ADJUSTABLE NEEDLE ROD

TO CHANGE THE SETTING

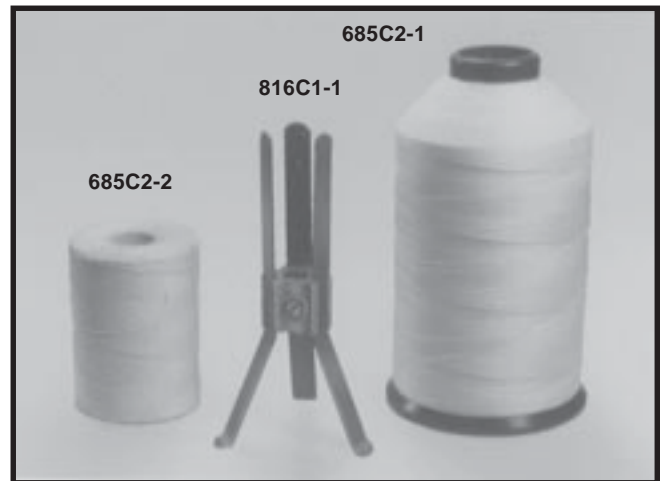
Loosen Allen Setscrew "A" and remove Round Head Screw "B". Then slide the Needle Chuck to the correct new setting for the Needle you wish to install; replace Round Head Screws "B" and tighten Allen Setscrew "A".

CHECK LENGTH OF NEEDLE AFTER ASSEMBLY IN THREADMARKER

Due to slight variations in lengths of some Needles, it may be necessary to make a finer adjustment of the length of the Needle Rod. Pull Threadmarker Handle down to its lowest position. Hold Handle in this position and tilt Threadmarker back so that a straight edge can be placed across the bottom of Base where Needle extends thru Base. Needle should come within 1/32" to 1/16" of touching straight edge. If adjustment is necessary, remove Cap "C" and remove Needle Rod Assembly. Loosen Jamb Nut "D", turn Knurled Nut "E" to lengthen or shorten as needed. Re-tighten Jamb Nut "D", reassemble Needle Rod in machine and check again.

WHEN CHANGING TO DIFFERENT DIAMETE NEEDLE

It is necessary to change the Needle Adapter and the Needle Bushing (located in Work Clamp Nut) for best results. See chart below for Part Numbers. NOTE: Needles are plain Needles without brass head.



| Part Number | Description |
|-------------|-------------------------------------|
| 685C2-1 | Nylon Thread 8 oz. Spool |
| 685C2-2 | Mercerized 20 oz. Spool |
| 816C1-1 | Thread Spool Holder for 8 oz. Spool |

| Capacity | Needle | Needle Diameter | Bushing | Adapter | Needle Length | Needle Point |
|----------|----------|-----------------|----------|----------|---------------|--------------|
| 6" | 228C1-11 | .078 | 21C13-50 | 29C6-104 | 7-7/8 | Triangular |
| 2" | 228C1-13 | .063 | 21C13-49 | 29C6-103 | 3-5/8 | Taper |
| 4" | 228C1-15 | .063 | 21C13-49 | 29C6-103 | 5-13/16 | Taper |
| 2" | 228C1-16 | .052 | 21C13-48 | 29C6-102 | 3-5/8 | Taper |
| 6" | 228C1-18 | .078 | 21C13-50 | 29C6-104 | 7-7/8 | Taper |

Eastman
Over a Century of Cutting Expertise

Superior

Threadmaker

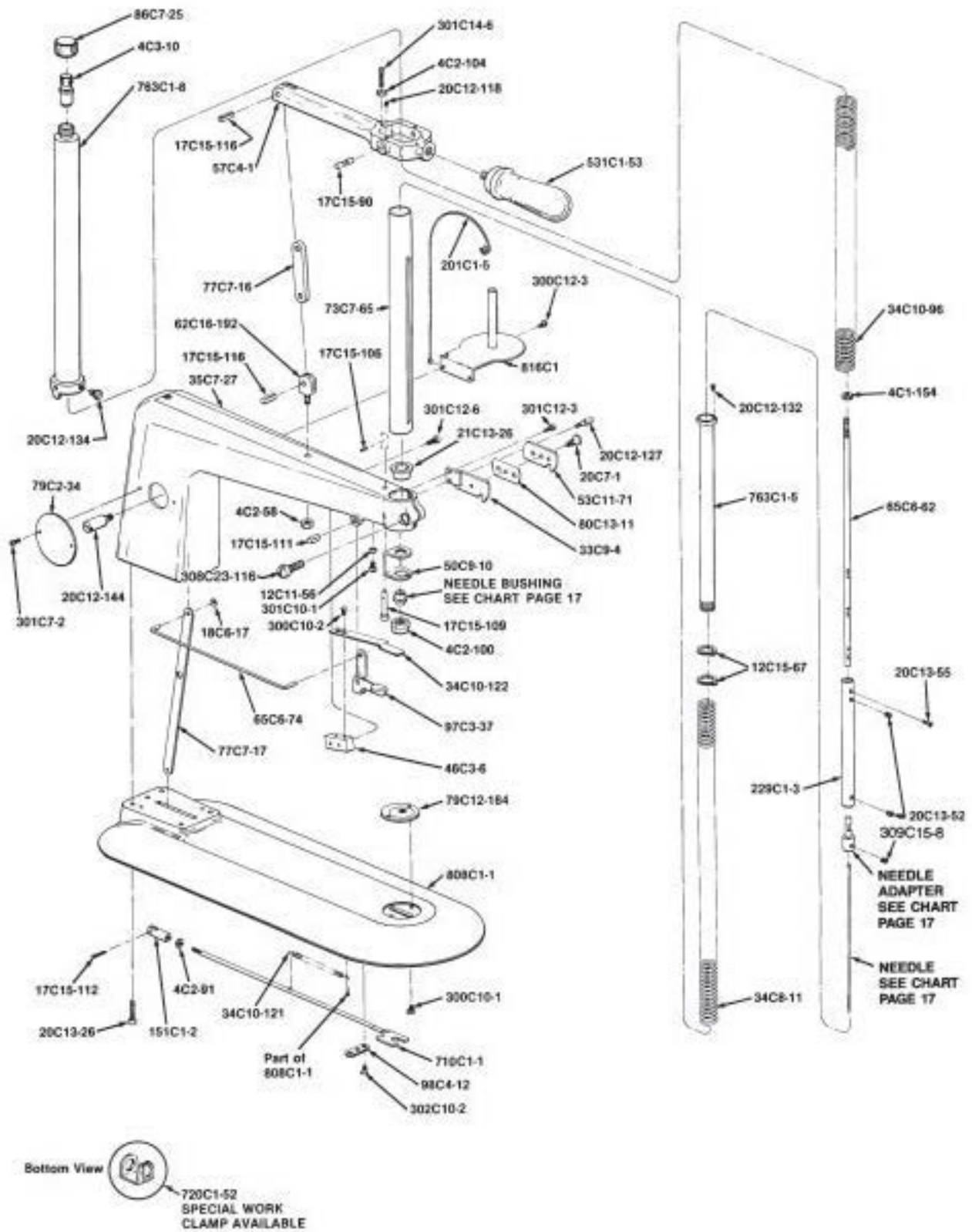
Model LTM

Illustrated Parts List



NOTE: Please specify model and serial number of machine when ordering parts.

| Part Number | No. Req'd | Description |
|-------------|-----------|-----------------------------------|
| 4C1-154 | 1 | Needle Rod Jam Nut |
| 4C2-58 | 1 | Nut, Hex 1/4 x 20 |
| 4C2-91 | 1 | Nut, Hex 10-32 |
| 4C2-100 | 1 | Work Clamp Nut |
| 4C2-104 | 1 | Nut, Hex 10-24 |
| 4C3-10 | 1 | Needle Rod Adjustment Nut |
| 12C11-56 | 1 | Washer Spacer |
| 12C15-67 | 2 | Work Clamp Locating Washer |
| 17C15-90 | 2 | Handle Lever Bearing Pin |
| 17C15-106 | 1 | Roll Pin |
| 17C15-109 | 1 | Release Pin |
| 17C15-111 | 1 | Looper Locking Latch Pin |
| 17C15-112 | 1 | Cotter Pin |
| 17C15-116 | 2 | Pivot Pin |
| 18C6-17 | 2 | Snap Ring |
| 20C7-1 | 1 | Cover Screw |
| 20C12-118 | 2 | Setscrew 10-32 x 1/4 |
| 20C12-127 | 1 | Cutter Holder Thread Guide Screw |
| 20C12-132 | 1 | Work Clamp Locating Screw |
| 20C12-134 | 1 | Handle Lever Tube Lock Screw |
| 20C12-144 | 1 | Looper Link Screw |
| 20C13-26 | 4 | Screw, Socket Hd. Cap 5/16-18 x 1 |
| 20C13-52 | 2 | Setcrew 10-32 x 1/8 |
| 20C13-55 | 1 | Screw 3-48 x 1/2 Round Head |
| 21C13-26 | 1 | Guide Bushing |
| 33C9-4 | 1 | Cutter Holder |
| 34C8-11 | 1 | Work Clamp Spring |
| 34C10-96 | 1 | Needle Lever Spring |
| 34C10-121 | 1 | Looper Spring |
| 34C10-122 | 1 | Looper Latch Spring |
| 35C7-27 | 1 | Thread Marker Arm |
| 46C3-6 | 1 | Spring Block |
| 50C9-10 | 1 | Work Clamp |
| 53C11-71 | 1 | Cutter Holder Cover |
| 57C4-1 | 1 | Handle Lever |
| 62C16-192 | 1 | Hinge Bracket |
| 65C6-62 | 1 | Needle Rod |
| 65C6-74 | 1 | Latch Rod |
| 73C7-65 | 1 | Slotted Steel Tube |
| 77C7-16 | 1 | Arm and Handle Lever Link |
| 77C7-17 | 1 | Looper Link |
| 79C2-34 | 1 | Number Plate |
| 79C12-184 | 1 | Needle Plate |
| 80C13-11 | 1 | Thread Cutter Knife |
| 86C7-25 | 1 | Cap |
| 97C3-37 | 1 | Looper Locking Latch |
| 98C4-12 | 1 | Looper Assembly Clip |
| 151C1-2 | 1 | Link and Looper Coupler |
| 201C1-5 | 1 | Thread Eye |
| 229C1-3 | 1 | Needle Chuck |
| 300C10-1 | 2 | Screw 6-32 x 3/16 Round Head |
| 300C10-2 | 2 | Screw 6-32 x 1/4 Round Head |
| 300C12-3 | 2 | Screw 8-32 x 3/8 Round Head |
| 301C7-2 | 2 | Screw, 4-36 x 3/16 Fillister Head |
| 301C10-1 | 1 | Screw 6-32 x 1/4 Fillister Head |
| 301C12-3 | 1 | Screw 8-32 x 3/8 Fillister Head |
| 301C12-6 | 2 | Screw 8-32 x 3/4 Fillister head |
| 301C14-6 | 1 | Screw 10-24 x 7/8 Fillister Head |
| 302C10-2 | 2 | Screw 6-32 x 1/4 Flat Head |
| 308C23-116 | 1 | Clamp Screw, Arm |
| 309C15-8 | 1 | Setscrew, 10-32 x 1/8 |
| 531C1-53 | 1 | Operating Handle |
| 710C1-1 | 1 | Looper Assembly |
| 720C1-52 | 1 | Work Clamp |
| 763C1-5 | 1 | Work Clamp Tube and Head |
| 763C1-8 | 1 | Handle lever Tube Assembly |
| 808C1-1 | 1 | Thread Marker Base |
| 816C1 | 1 | Spool Holding Assembly |



Eastman®

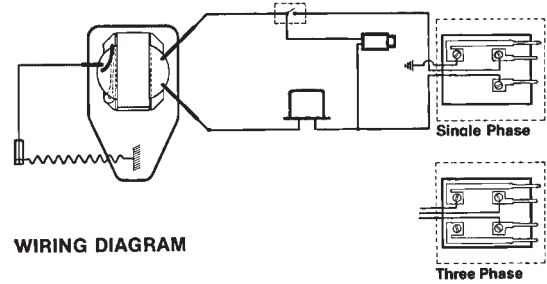
Over a Century of Cutting Expertise

Superior

Hot Notcher

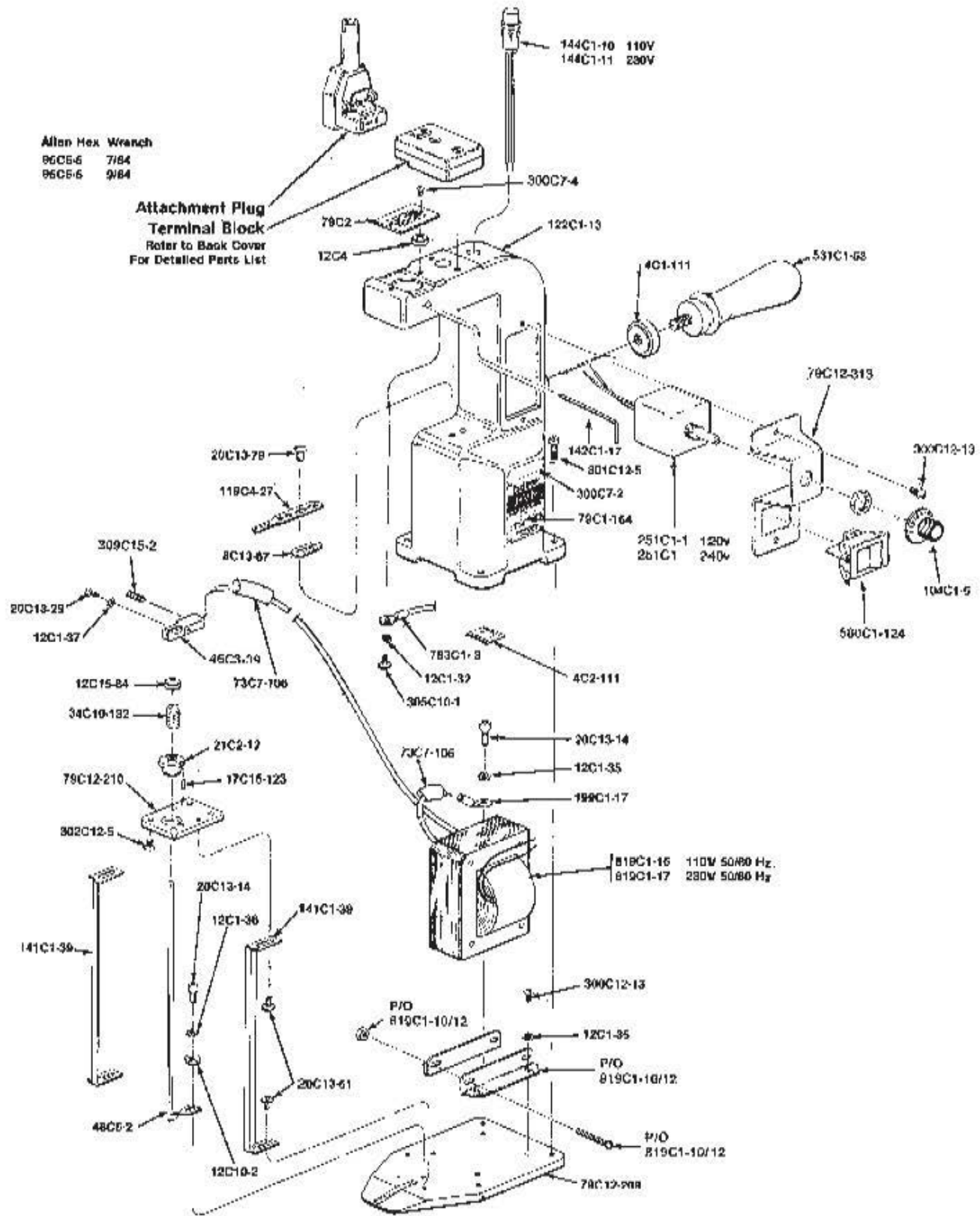
Model HVN

Illustrated Parts List



| Part Number | No. Req'd | Description |
|-------------|-----------|---------------------------------|
| 4C1-111 | 1 | Locknut, Handle |
| 4C2-111 | 1 | Nut, Speed |
| 8C13-67 | 1 | Marking Wire Insulation |
| 12C1-32 | 1 | Washer, Lock |
| 12C1-35 | 4 | Washer, Shake Proof |
| 12C1-36 | 1 | Washer, Lock |
| 12C1-37 | 2 | Washer, Lock |
| 12C4 | 2 | Insulation Washer |
| 12C10-2 | 1 | Washer |
| 12C15-84 | 1 | Washer, Guide Spring |
| 17C15-123 | 1 | Pin, Roll |
| 20C13-14 | 2 | Screw, Cap |
| 20C13-29 | 2 | Screw, Cap |
| 20C13-51 | 4 | Screw, Truss Head Stnls |
| 20C13-79 | 2 | Screw, Nylon Round Head |
| 21C2-12 | 1 | Wire Insulation Bushing |
| 34C10-132 | 1 | Wire Straightener Spring |
| 46C3-39 | 1 | Block, Contact |
| 48C5-2 | 1 | Marking Wire |
| 73C7-104 | 1 | Vinylglass Tubing |
| 73C7-106 | 2 | Shrink Tubing |
| 79C1-154 | 1 | Number Plate |
| 79C2 | 1 | Name Plate |
| 79C12-209 | 1 | Base Plate |
| 79C12-210 | 1 | Plate, Gauge Support |
| 79C12-313 | 1 | Plate, Voltage Control |
| 95C5-5 | 1 | Wrench, Allen Hex 7/64 |
| 95C5-6 | 1 | Wench, Allen Hex 9/64 |
| 104C1-5 | 1 | Dial Indicator |
| 119C4-27 | 1 | Support, Wire |
| 122C1-13 | 1 | Housing |
| 141C1-39 | 2 | Gauge Bar |
| 142C1-17 | 1 | Hey, Contact Block |
| 144C1-10 | 1 | Lamp, Pilot Lite 120v |
| 144C1-11 | 1 | Lamp, Pilot Lite 240v |
| 199C1-17 | 1 | Lug Cool |
| 251C1 | 1 | Control Heat 230v |
| 251C1-1 | 1 | Control Heat 110v |
| 300C7-2 | 4 | Screw, 4-36 x 3/16 Round Hd. |
| 300C7-4 | 2 | Screw, 4-36 x 5/16 Round Hd. |
| 300C12-13 | 5 | Screw, 8-32 x 5/16 Round Hd. |
| 301C12-5 | 4 | Screw, 8-32 x 5/8 Fillister Hd. |
| 302C12-5 | 4 | Screw, 8-32 x 1/2 Flat Hd. |
| 305C10-1 | 1 | Screw, 6-32 x 1/4 Binding Hd. |
| 309C15-2 | 2 | Setscrew, 10-32 x 1/4 |
| 531C1-53 | 1 | Operating Handle, Long |
| 580C1-124 | 1 | Switch |
| 783C1-3 | 1 | Ground Wire Assembly |
| 819C1-10 | 1 | Transformer, 110v 50/60 Hz |
| 819C1-12 | 1 | Transformer, 230v 50/60 Hz |

NOTE: Please specify model and serial number of machine when ordering parts.



Eastman
 Over a Century of Cutting Expertise

Superior

Limited Warranty. Eastman warrants to the buyer that the equipment shall be free from defects in materials or workmanship for a period of 180 days commencing on the date of invoice. Any goods or parts claimed by the buyer to be defective must be returned to Eastman, freight charges prepaid, within the 180 day warranty period. If Eastman determines that the goods or parts are defective in materials or workmanship, Eastman's sole obligation under this warranty shall be, at Eastman's sole option, to repair or replace the defective goods or parts or to provide the buyer a credit equal to the portion of the purchase price allocable to the defective goods or parts. This warranty shall not apply if defects are caused by product misuse or neglect, if the machine has been altered or modified by the buyer, or if other than genuine Eastman belts, emery wheels, knives or parts are used in the machine. THIS WARRANTY IS THE ONLY WARRANTY APPLICABLE TO THIS PURCHASE. SELLER DISCLAIMS ALL OTHER WARRANTIES, EXPRESS OR IMPLIED, INCLUDING, BUT NOT LIMITED TO, THE IMPLIED WARRANTIES OF MERCHANTABILITY AND FITNESS FOR A PARTICULAR PURPOSE.

Limitation of Liability. Eastman's liability to the buyer, and the buyer's remedies from Eastman, whether in contract, negligence, tort, under any warranty or otherwise, shall be limited to the remedies provided in the foregoing Limited Warranty. In no event shall Eastman have any responsibility or liability to the buyer for (a) any special, indirect, incidental, or consequential damages, including, but not limited to, loss of use, revenue, or profit, even if Eastman has been advised of the possibility of such damages, or (b) any claim against the buyer by any third party. The price stated for the product sold is a consideration for limiting Eastman's liability.



Thread Marker
Model LTM
Page 16-19



Magnum
Punch Perforator
Model MP2
Page 12-15

Thread Marker-Model LTM

The model LTM Thread Marker is ideal for marking applications where a cloth drill is inappropriate. With a marking capacity of 2 inches to 6 inches in tapered or triangular needles, the Thread Marker is the economical alternative to drill marking for low production items. See page 17 for optional equipment information.

Cloth Drill Marker- Model CD3, CD3H

Quality engineered for economical operation with all but the heaviest materials. The CD3 and CD3H hot drill are available with all of the features of our top of the line equipment; 4 to 11-1/2 inch telescopic drive shaft, cold or solid state heated drills/awls with hole sizes of 3/64 to 3/8 inch, make this model appropriate for almost all drill marker applications.

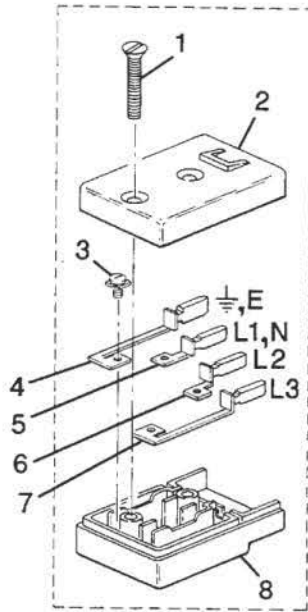
Magnum Punch-Model MP2

Capable of creating a pattern through as many as five thicknesses of paper, the Magnum Punch delivers four clean holes per inch and rugged dependability unmatched by its competitors. The Magnum is available with 1/16 inch (1.58 mm) standard and 3/32 inch (2.38 mm), 1/8 inch (3.18 mm) special ordered punches for any requirement. Optional equipment available includes a special hard rubber mat to prolong the life of your punches and your table.

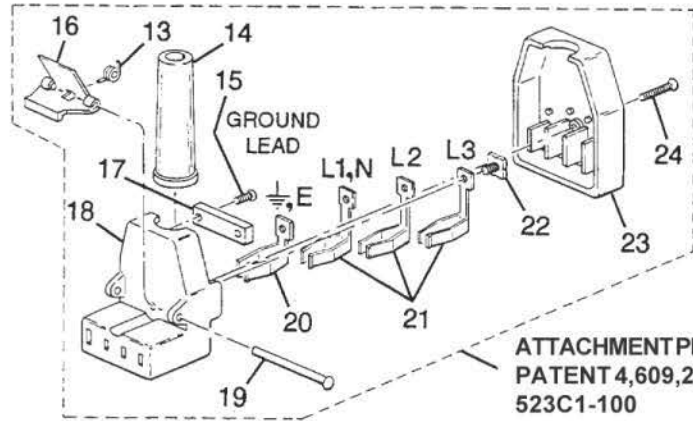
Eastman®

Over a Century of Cutting Expertise

Superior



TERMINAL BLOCK
PATENT 4,609,244
508C1-100
SHOWN

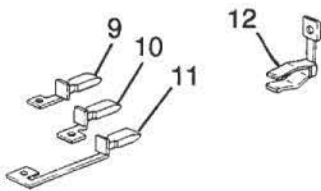


ATTACHMENT PLUG
PATENT 4,609,244
523C1-100
SHOWN



WARNING
Wiring Instructions
Eastman
Attachment Plugs

Electrical connections to this device should be made by a qualified electrician who is familiar with applicable codes and regulations. To ensure operators safety, a ground lead must be connected to terminal "E" on the attachment plug. Disconnect this equipment from electrical power before proceeding with any disassembly for adjustment, inspection or repair.



| ITEM | PART NO. | DESCRIPTION |
|------|-----------|-------------------------------|
| 1 | 302C15-8 | Screw, 10-32 x 1 1/8 Flat Hd. |
| 2 | ----- | Terminal Block Top |
| 3 | 20C13-103 | U-Lock Screw |
| 4 | 667C1-22 | Terminal Contact w/Pin E |
| 5 | 667C1-23 | Terminal Contact w/pin L1, N |
| 6 | 667C1-24 | Terminal Contact w/Pin L2 |
| 7 | 667C1-25 | Terminal Contact w/Pin L3 |
| 8 | 51C1-61 | Terminal Block Bottom |
| 9 | 667C1-26 | Terminal Contact w/Pin L1, N |
| 10 | 667C1-27 | Terminal Contact w/Pin L2 |
| 11 | 667C1-28 | Terminal Contact w/Pin L3 |
| 12 | 47C3-21 | Terminal Sleeve (current) |
| 13 | 34C10-170 | Spring |
| 14 | 1C13-27 | Cord Sleeve |
| 15 | 300C8-2 | Screw, 4-40 x 1/2 Round Hd. |
| 16 | 98C4-37 | Thumb Clip |
| 17 | 50C7-27 | Cord Clamp |
| 18 | ----- | Attachment Plug Body |
| 19 | 91C4-22 | Rivet |
| 20 | 47C3-19 | Terminal Sleeve |
| 21 | 47C3-20 | Terminal Sleeve (current) |
| 22 | 20C13-103 | U-Lock Screw |
| 23 | ----- | Attachment Plug Cover |
| 24 | 302C8-8 | Screw, 4-40 x 7/8 Flat Hd. |
| 25 | ----- | Terminal Block Complete |
| 26 | ----- | Attachment Plug Complete |

| EASTMAN 10A 380V 3~ | EASTMAN 10A 220V 3~ | EASTMAN 10A 220V ~ | EASTMAN 15A 120V ~ | EASTMAN 25A 42V ~ |
|---------------------------|---------------------------|--------------------------|--------------------------|-------------------------|
| | | | | |
| 2 | 2 | 2 | 2 | 2 |
| 51C1-63 | 51C1-64 | 51C1-65 | 51C1-66 | 51C1-67 |
| 4 | 4 | 3 | 3 | 3 |
| 1 | 1 | 1 | 1 | 1 |
| 1 | 1 | 1 | -- | -- |
| 1 | 1 | -- | 1 | -- |
| -- | 1 | -- | -- | 1 |
| 1 | 1 | 1 | 1 | 1 |
| -- | -- | -- | 1 | 1 |
| 1 | -- | 1 | -- | -- |
| 1 | 1 | 1 | 1 | 1 |
| 1 | 1 | 1 | 1 | 1 |
| 82C1-45 | 82C1-46 | 82C1-47 | 82C1-48 | 82C1-49 |
| 1 | 1 | 1 | 1 | 1 |
| 1 | 1 | 1 | 1 | 1 |
| 2 | 3 | 1 | 1 | 1 |
| 4 | 4 | 3 | 3 | 3 |
| 53C3-19 | 53C3-20 | 53C3-21 | 53C3-22 | 53C3-23 |
| 1 | 1 | 1 | 1 | 1 |
| 508C1-99 | 508C1-100 | 508C1-101 | 508C1-102 | 508C1-103 |
| 523C1-99 | 523C1-100 | 523C1-101 | 523C1-102 | 523C1-103 |

Eastman®

Over a Century of Cutting Expertise